

# C-PUMA Master

Electrical motor & Endo motor  
One machine multi-use ,Super easy to use!



Streamlined Design  
Beauty, but not only beauty



5 inch  
800\*480 px

Bigger screen, ensures that the  
treatment parameters are visible  
more easy to operate



All touch screen  
The convenience you can't image



# C-PUMA Master

## Electric motor

With 1:5  
contra angle

Max rpm  
200000



More options



Adapt with contra angle and straight head in  
accordance with ISO3964

# Motor Speed

Easy to deal with all kinds of basic situations



# Super High Torque

Keep the constant cutting force

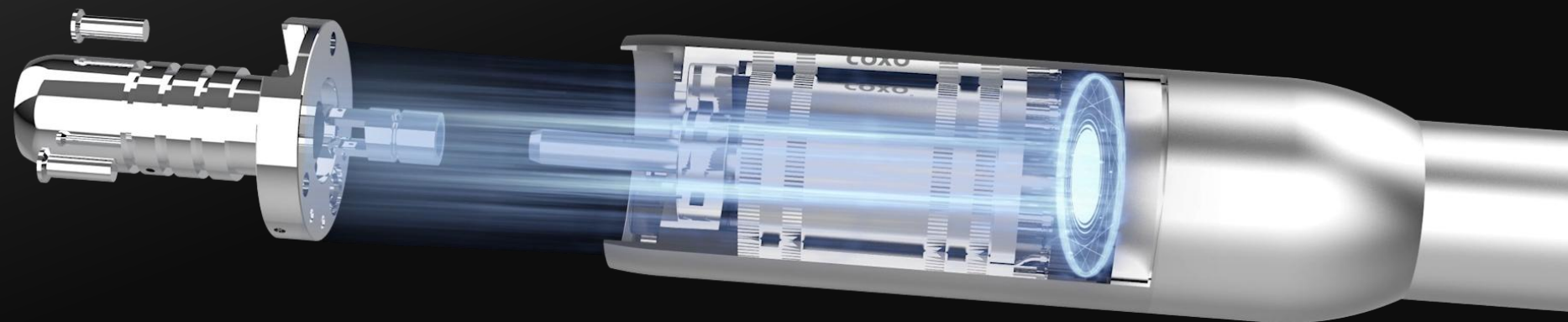


3.0N.cm

# Handle with air cooling design

More  
humanized  
design

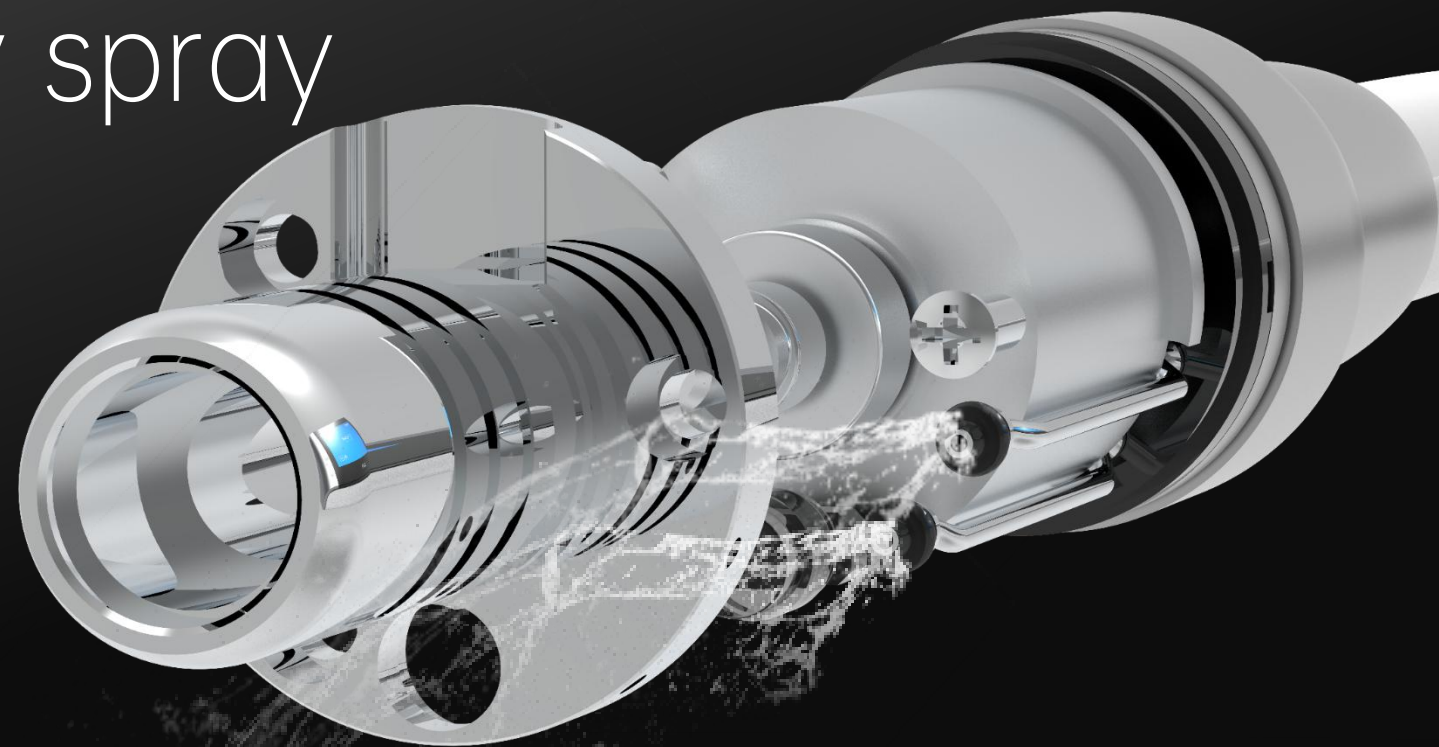
Keep  
comfortable  
temperature





# Internal waterway spray

More convenient  
More stable

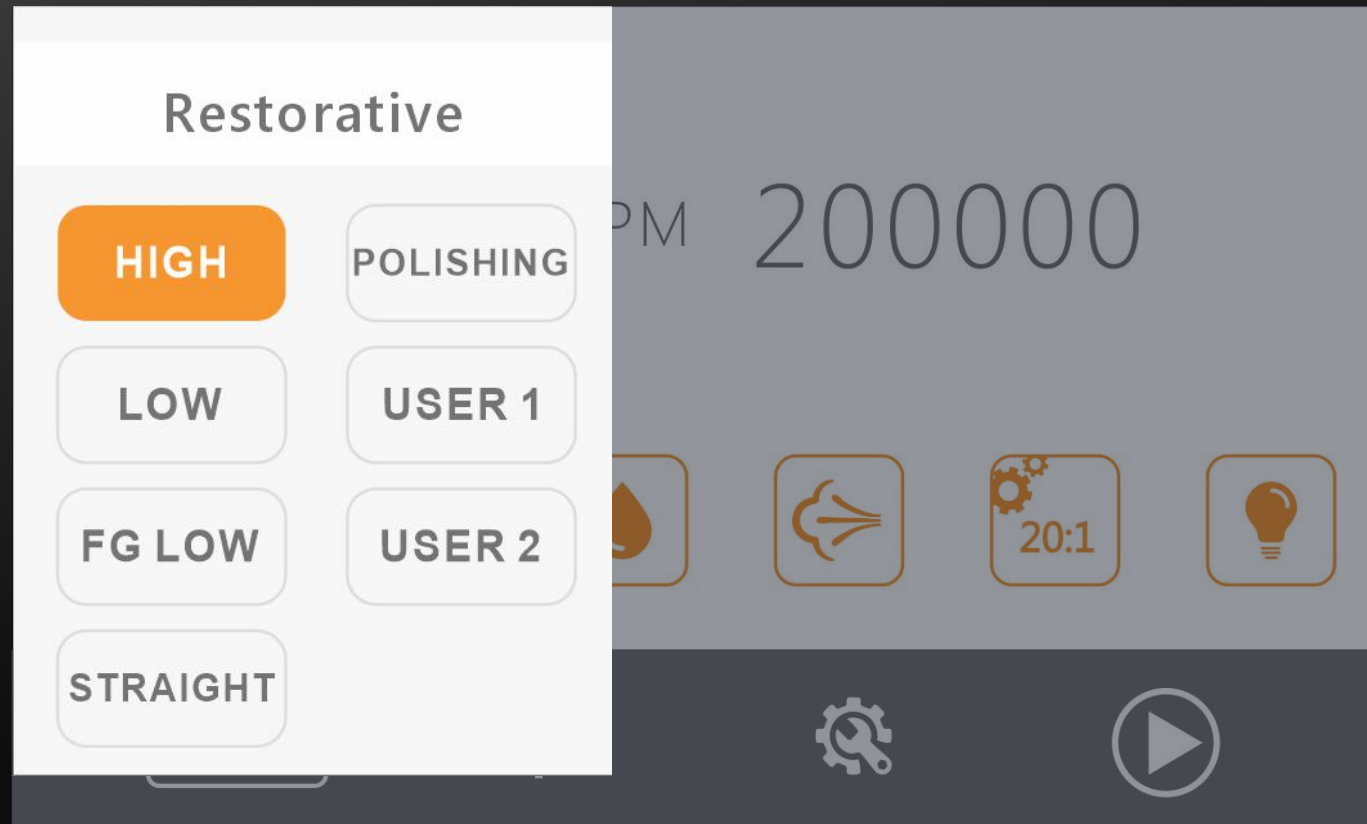


# Powerful LED

- >25000lux, it can give you a clear vision
- Delay time is adjustable

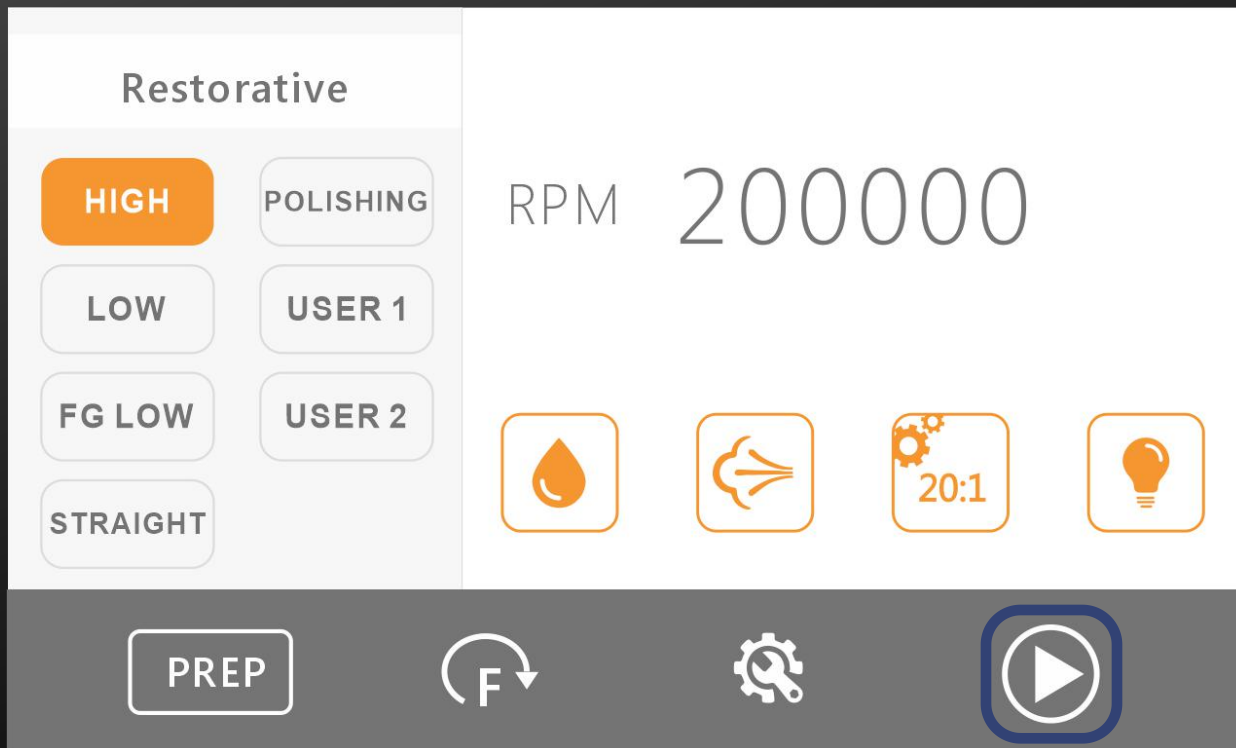


Build-in 7 memory programs



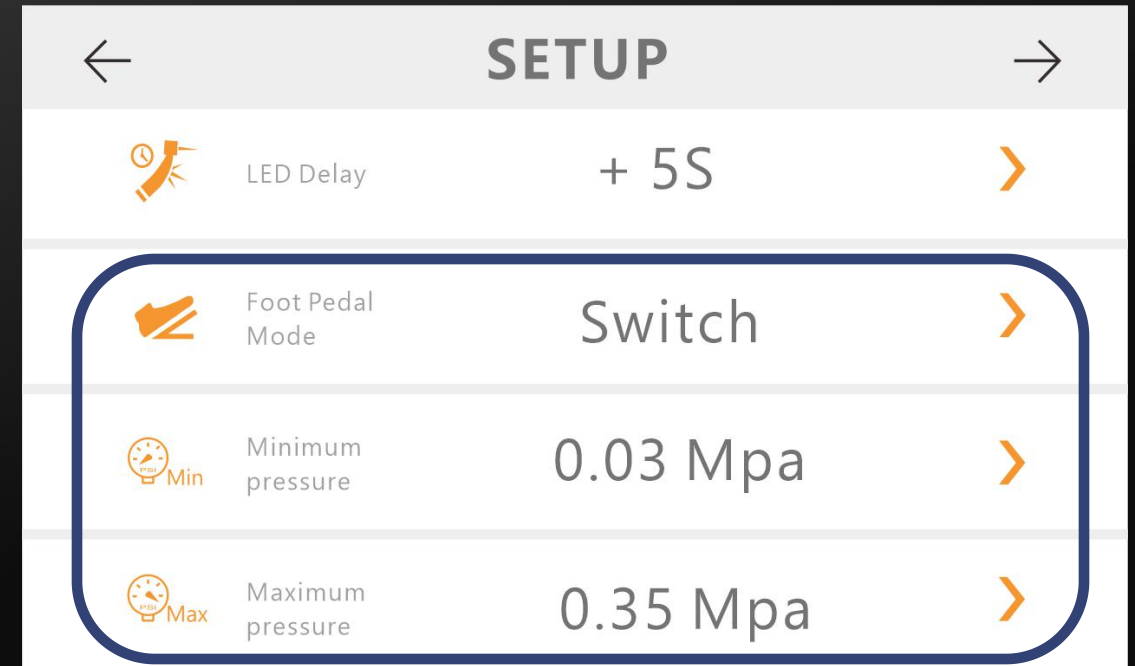
# Manual Start

Touch & Hold to start or stop the motor  
Prevent wrong operation



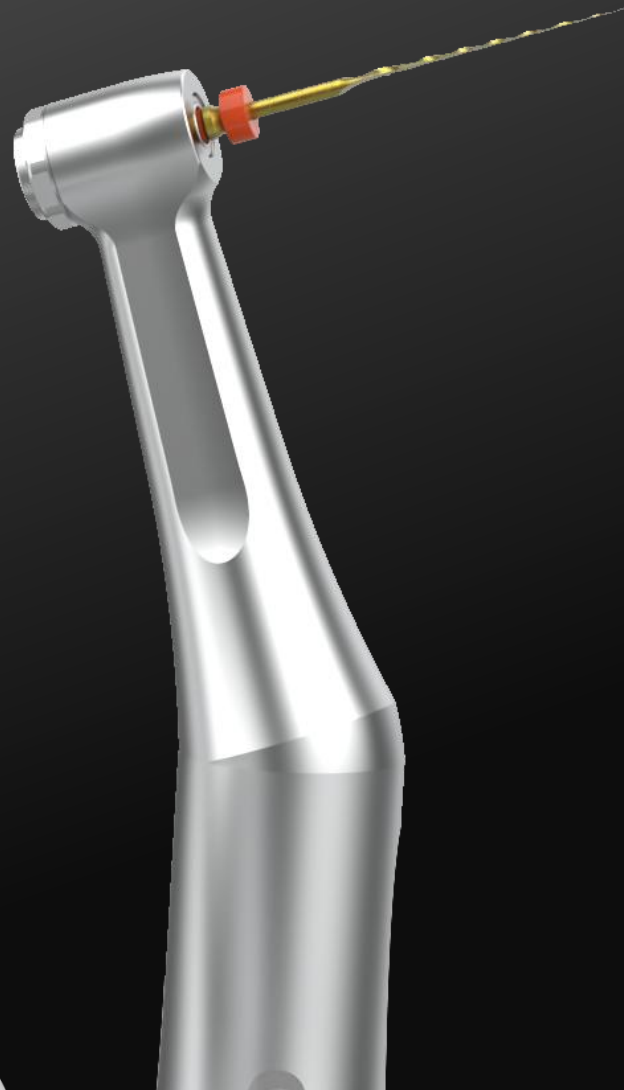
## Pneumatic Start

- Can use foot pedal mode to star/stop the motor.
- Suitable for two foot pedal mode Switch/Linear
- Starting air pressure of the motor can be customized



# C-PUMA Master

## Endo motor



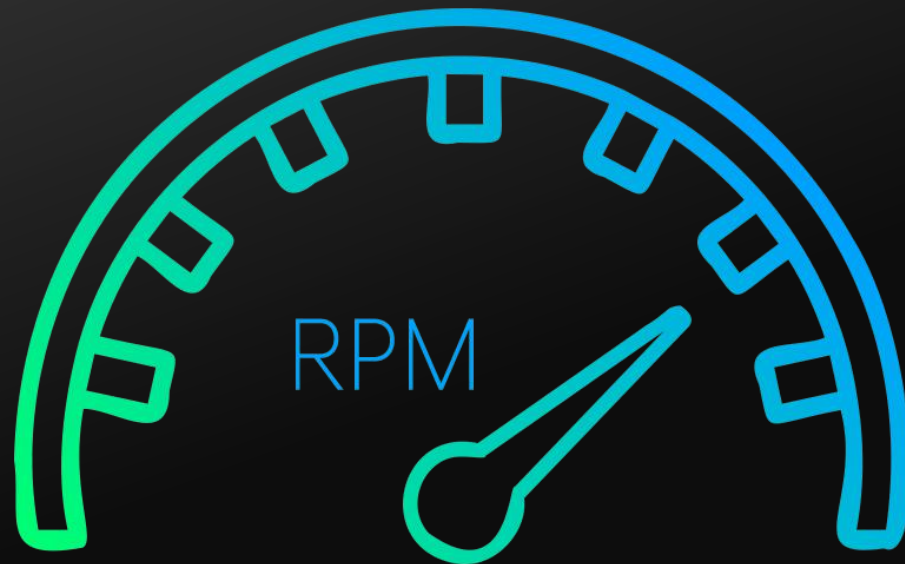
With 6:1 mini head  
contra angle

Can be used for different  
root canal shapes



# Motor Speed

Easy to deal with all kinds of basic situations



250~  
1200

Super High Torque

Keep constant torque output



0.6~  
5.1N.cm



Built-in system

7 Mainstream brands

30+ file system

200+ file parameters



# C-PUMA master Parameter

Power adaptor:           Input AC100~240V   Output DC29.5V  
Main unit:                Input power AC 24V  
Motor speed:             Maximum 40,000rpm  
Motor torque:            Maximum 3.0N.cm  
Motor outer diameter: 20.6mm  
LED brightness:         >25,000lux

Electric motor model(With 1:5 contra angle)  
Speed: 10,000~200,000rpm

Endo motor model(With 6:1 contra angle)  
Speed: 250~1,200rpm  
Torque: 0.6~5.1N.cm

# COXO<sup>®</sup>

**Professional Dental Manufacturer**

SINCE 2003

As an international company  
We always put innovation and responsibility first

COXO MEDICAL INSTRUMENT CO.,LTD.

Add: Building A4,A Zone,Guangdong New Light Source Industrial Base,

Langsha,Luocun,Shishan town,Nanhai District,

Foshan City,Guangdong Province,China

Tell: +86 757 66692050 Fax: +86 757 81800058

Web: [www.coxotec.com](http://www.coxotec.com)

Email: [coxotec@gmail.com](mailto:coxotec@gmail.com)